



Make a difference

**work in
social
care**

Recruiting Now



Why choose social care?

Social care provides physical, emotional and social support to help people live their lives. People may need support for various reasons and at different stages in their lives to develop and maintain their independence, dignity and control.



Have a positive impact on peoples lives

Adult social care is a skilled and respected workforce. Regardless of where you choose to work within adult social care, the workforce takes great pride in the difference, they make to the lives of the people they support.



Working in social care offers diversity

Diversity is at the heart of social care and the workforce supports a varied client group, this could be adults ranging from 18 years of age through to people at the end of their lives as well as those with learning disabilities and/or autism and dementia.



We hire based on values

Having the right values and beliefs is key to working in social care. If you consider yourself to be considerate, empathetic, reliable and non-judgemental then you could be right for the role. Take the 'could you care' quiz [here](#).



Adult social care will always be open for business

Adult social care is a growing workforce with lots of opportunities for progression. There are short-term vacancies available to support through COVID-19 as well long term pathways for a fulfilling career in social care?



What jobs could I do?

Somewhere in your community there's a job that you can do to help others. Whether that's a direct care role or supporting other vital areas of a care organisation, you can help people access the care and support that they need.

Here are just some of the many available roles:

Care worker

You'll support people with all aspects of their day to day living, including their overall care, comfort and wellbeing.

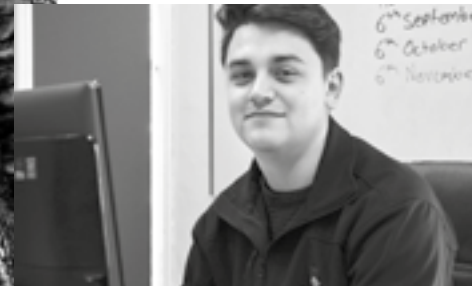


Housekeeping

You'll ensure that the environment in a residential home or sheltered housing is safe, tidy and clean.

Cook/Kitchen Assistants

You'll prepare, cook and serve meals to people usually in a nursing or residential home, or in a day care centre.



Administration and office roles

You'll carry out administration tasks to support the organisation in areas such as finance, HR and marketing.

Want to find out more about our job roles available. Visit:

Think Care Careers

Could you work in social care?

Somewhere in your community there's a job that you can do to help others. If you like working with people, social care offers a worthwhile job that can turn into a rewarding, long-term career.

A Question of Care: a career for you? is an interactive quiz that uses videos to recreate common situations that might occur in a day-to-day social care role. At the end you receive a detailed personal profile telling you if you've got what it takes.

[Take the quiz...](#)



Find out more

There are different things you can do right now to help you find work in the sector.

Visit Think Care Careers and see what roles might interest you.

[Think Care Careers](#)



Search for a job at 'DWP Find a job'.

[Find a job](#)



Search locally using your postcode to see what services are closest to you.

[homecare.co.uk](#)



[carehome.co.uk](#)

